

**Embroidery machine PT1501/1201/0601-TS**

**Touch screen emergency repair instruction**

Ricoma (Shenzhen) Co., Ltd.

[www.ricoma.cn](http://www.ricoma.cn)



Caution

**Notice:**

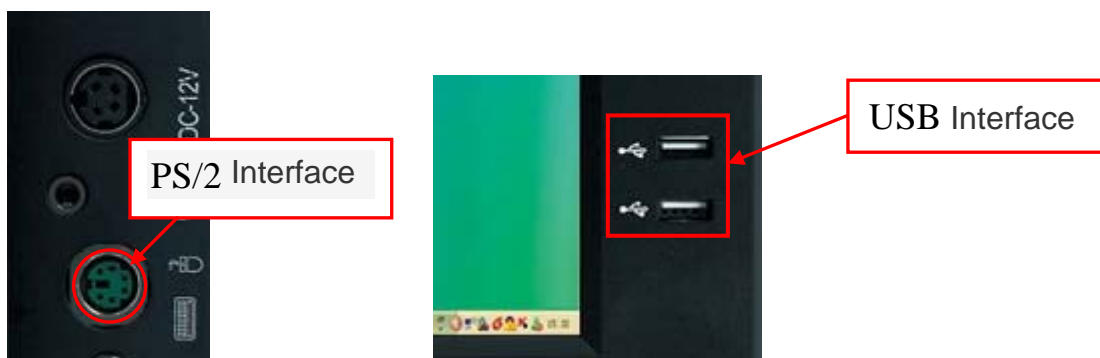
1. Please turn off the power of embroidery machine after you turn off touch screen computer in any case. How to turn off: press switch on the right of the screen (see below picture), wait for no sense on the screen, then press the switch back of the machine, otherwise wrong operation cause system halt easily.
2. Back-up pattern and important static at any time, prevent accidents.
3. Using this method, the files of C disk will clear out, so we suggest important dates were not kept at C disk.
4. Using this method, you just need to press F11, no other operations;
5. When using this method, please no power off or force interrupt, otherwise computer system can't restart



Before sales, all driver and software have been normally installed. When computer system halt or can't restart or other serious damages, please strictly operate the below method. It takes 4 minutes, the computer could recover the best state before sales.

### Steps as follows:

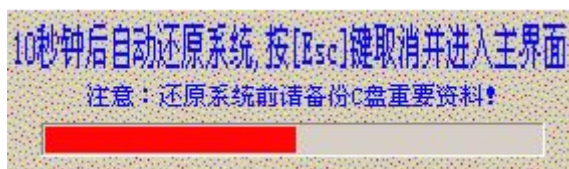
1. Connect PS/2 keyboard or USB keyboard.  
While no power of the touch screen, connect the keyboard and computer. Interface of the PS/2 keyboard and interface of USB, as below pictures

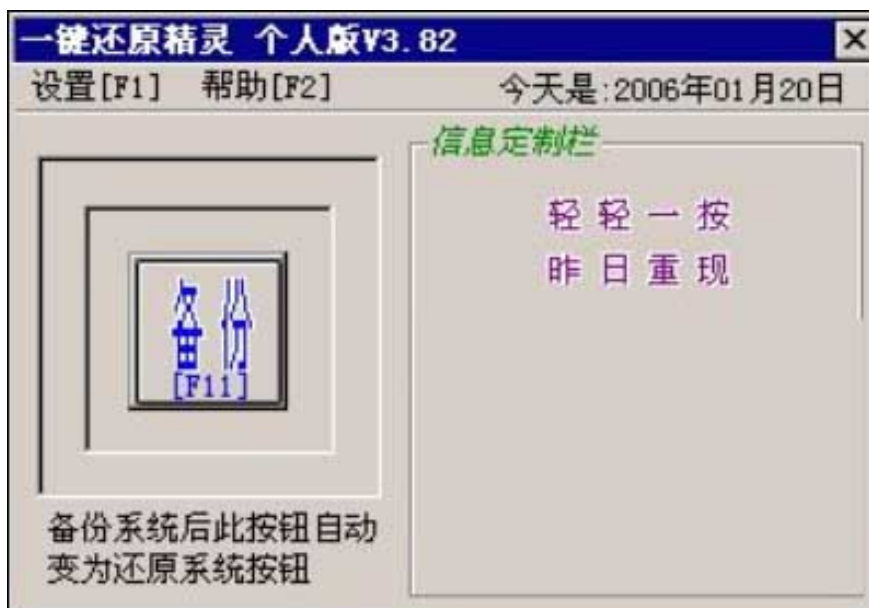


2. Press the power switch of computer, wait the screen display as follow:

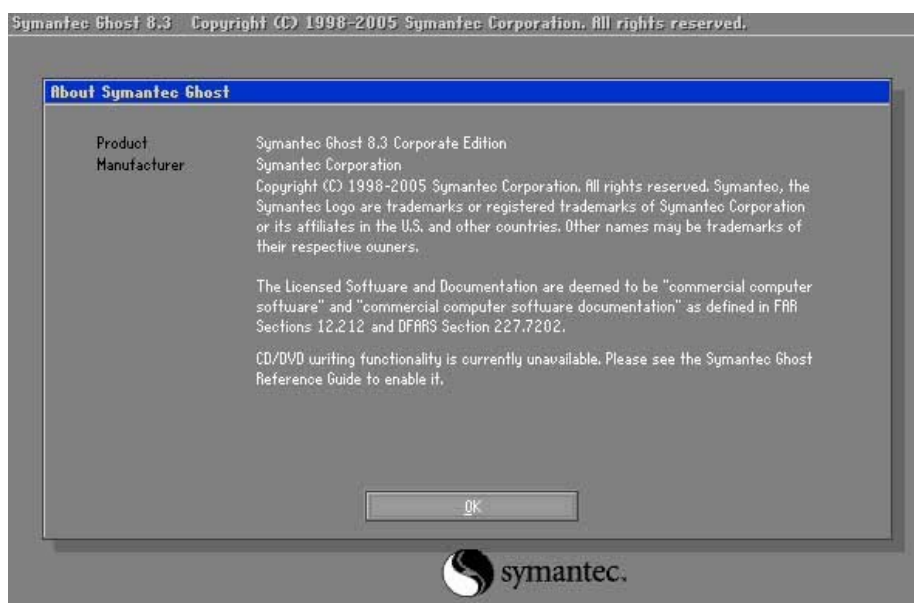
“\*\*\*\*\*Press [F11] to start recovery system \*\*\*\*\*”

Then press the F11, you don't care next page on the screen. You will see the below page as follows,





3. After seconds, it starts to the main recovery picture, as below picture, this process takes 2 minutes.



After recovery, system restarts automatically, your computer get back best state before sales.

If you have other system problem, please contact the local agent or customer service on the [www.ricoma.cn](http://www.ricoma.cn)